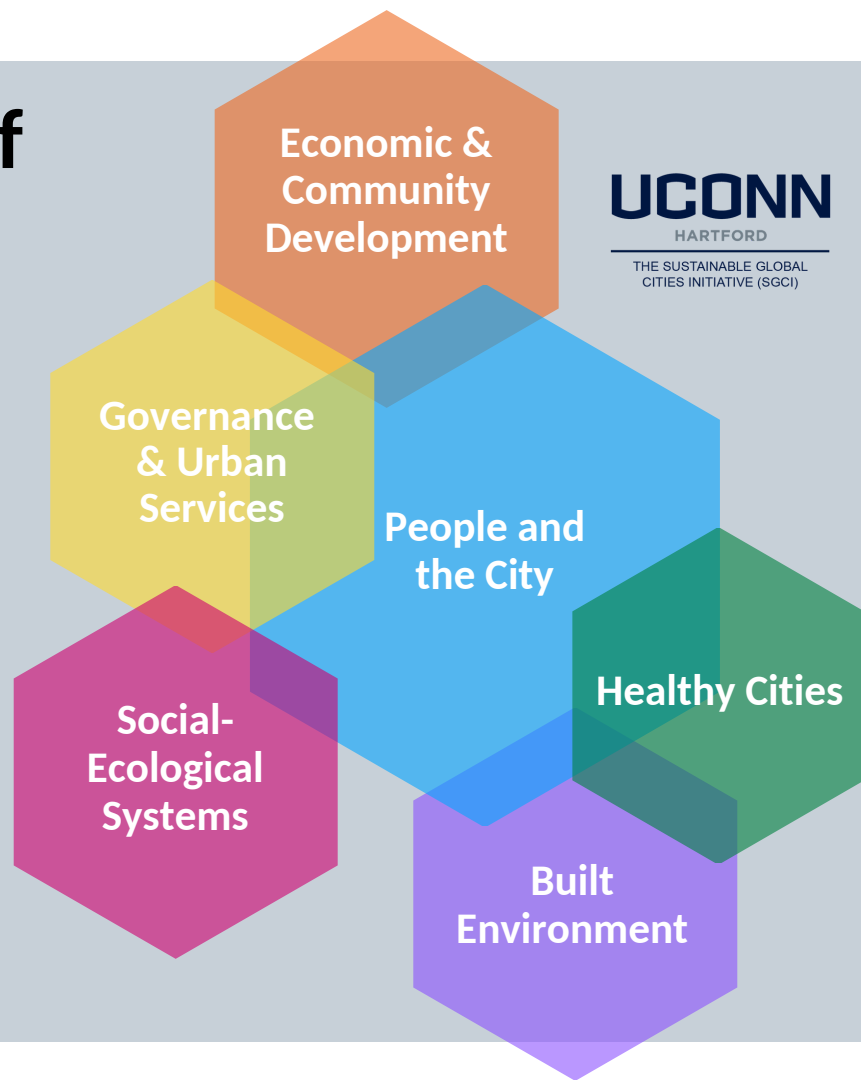


Six Core Themes of Urban Research

Research and scholarship concerning cities is often interdisciplinary. The SGCI will use these six themes, broadly defined below, to better categorize UConn's research capacity on topics involving cities.

Our Faculty Affiliates will also be grouped according to these six themes; upon joining the SGCI, affiliates self-select which theme(s) best represent their research and scholarship, with the knowledge that these themes are very broadly defined and that most urban-related topics fall into more than one category.



- **People and the City:** Understanding population dynamics in their multiple dimensions, including race/ethnicity, gender, age, income, immigrant status, community, social capital, and intergenerational outcomes, and the challenges, behaviors and experiences of various groups
- **Healthy Cities:** Physical, emotional, and social well-being of various population groups, and factors such as access, food security, influence, and income, that affect health outcomes and intervention opportunities
- **Social-Ecological systems:** Interaction of human-dominated and other biophysical systems, including land, food, energy, water and climate, and their effects on humans and on the environment
- **Built Environment:** Multidimensional impacts of human-made space, including infrastructure systems and sustainable design, on residents and businesses and its sustainability
- **Economic and Community Development:** The wealth generation and distribution processes and challenges for inclusive economic development as shaped by technological innovation, workforce development, and factor markets
- **Governance and Urban Services:** Civic and electoral processes and the changing nature of the provision and finance of public and social services driven by, in part, technological innovation